

# SCRIPT**CAST** Pro



## Soho Dongle I User Manual

Screen share on Smartphones / Tablets / Laptops



# SCRIPTCAST Pro

## Soho Dongle I

The ScriptCast Pro Soho device is perfect for small and home offices. This highly portable, versatile device can be used on different TV and projector screens.

The Soho device supports all EZCast major features but also comes with brand new innovations such as Host Control, Preferred Device, Split Screen, and AirView.



## Hardware Installation

### 1 Connect to the TV

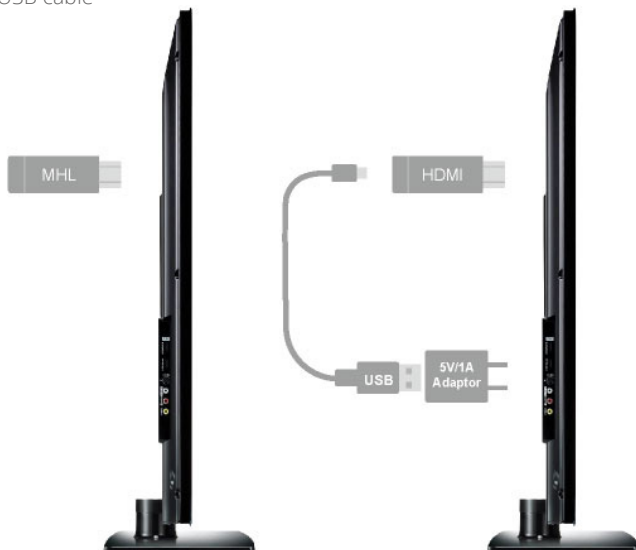
Plug the Soho Dongle to the TV or Projector into the HDMI port

### 2 Connect to power

Plug the Dongle to the power adapter using the USB power cable (recommended) or plug the dongle directly into the TV's USB port using the USB cable

### 3 Switch TV to HDMI

Turn the TV on and press the Source button to switch to HDMI



# Setup Instructions

---

# 1

## Connect to the Dongle Wi-Fi SSID

Go to your device's Wi-Fi settings and connect to the SSID shown on the top of the purple home screen of the dongle. Use the password provided on the screen.

# 2

## Download the EzCast Pro App

Download the EzCast Pro App from your device's app store or go to [www.scriptcast.co.uk/download](http://www.scriptcast.co.uk/download)

# 3

## Connect your device to the dongle

Open the EzCast Pro App, connect to the dongle device by pressing the search icon (mobile) on the top right corner of the EzCast App or the 'Search Device' button (desktop).

# 4

## Connect the dongle to your local Wi-Fi

Go to the host menu (top left corner of the EzCast App screen), press the Settings option and select the Wi-Fi option. Choose your local Wi-Fi and connect the dongle to the local Wi-Fi



# How to use the SCRIPTCAST Pro Soho Dongle I?

---

## Laptop/PC

To mirror your screen

**1**

### Download the EzCast Pro App

Download the EzCast Pro App on your device from our website  
[www.scriptcast.co.uk/download/](http://www.scriptcast.co.uk/download/)

**2**

### Install the EzCast Pro App

Launch the installer and install the EzCast Pro app on your PC or Laptop. The installation may require you to restart your laptop or PC

**3**

### Connect to the Soho Dongle

Launch the EzCast Pro app and press 'Search Device'. Click to connect to the SCRIPTCAST Pro Soho Dongle from the list

**4**

### Screen Mirror

Once connected, you can start screen mirroring by pressing the 'Mirror' button on the top menu bar of the application.

To use the EzCast Pro Features

**1**

### Connect to the Soho Dongle

Ensure that you have downloaded and installed the EzCast Pro App. Launch the App and connect your device to the Soho Dongle via the Wi-Fi SSID shown on the screen

**2**

### Enjoy all features

Once you have connected to the Dongle, choose the features you wish to use in the EzCast Pro app and enjoy presenting!

## Apple iOS

To mirror your screen

**1**

### **Connect to the Soho Dongle**

Turn the TV/Projector on after connecting the Dongle and connect your device to the Wi-Fi SSID shown on the top left corner of the TV/Projector screen

**2**

### **Connect via AirPlay/Screen Mirroring**

Swipe up/down on your Apple mobile device or tablet and press the AirPlay/Screen Mirroring option

**3**

### **Start Mirroring**

Choose the Soho Dongle from the list of devices and confirm to start mirroring your screen

To use the EzCast Pro Conference Features

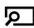
**1**

### **Download EzCast Pro**

Download the EzCast Pro App from your device's app store or download from [www.scriptcast.co.uk/download-for-ios/](http://www.scriptcast.co.uk/download-for-ios/)

**2**

### **Connect to the Dongle**

Press the search icon  on the top right corner of the application and select the dongle device. The app will connect and your app features will appear.

**3**

### **Choose your features**

Click on the feature you wish to use from the list in the EzCast Pro app and start presenting!

## Android OS

To mirror your screen

1

### Connect to the Wi-Fi SSID

Turn the TV/Projector on after connecting the dongle and connect your device to the Wi-Fi SSID shown on the purple home screen of the SCRIPTCAST device

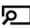
2

### Download EzCast Pro

Download the EzCast Pro App from your device's app store or download from [www.scriptcast.co.uk/download-for-android/](http://www.scriptcast.co.uk/download-for-android/)


3

### Connect to the Soho Dongle

Press the search icon  on the top right corner of the application and select the Dongle device. The app will connect and your app features will appear.

4

### Start Mirroring

Press the mirroring icon  on the top right side of the screen. You will be asked to confirm your choice and start sharing!

To use the EzCast Pro Conference Features

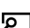
1

### Download EzCast Pro

Download the EzCast Pro App from your device's app store or download from [www.scriptcast.co.uk/download-for-android/](http://www.scriptcast.co.uk/download-for-android/)

2

### Connect to the Soho Dongle

Press the search icon  on the top right corner of the application and select the dongle device. The app will connect and your app features will appear.

3

### Choose your features


Click on the feature you wish to use from the list in the EzCast Pro app and start presenting!

# EzCast Pro Features

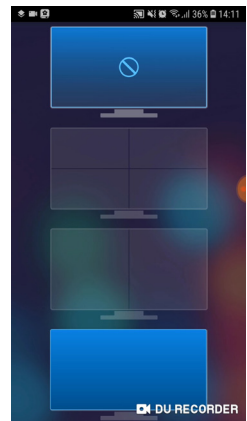
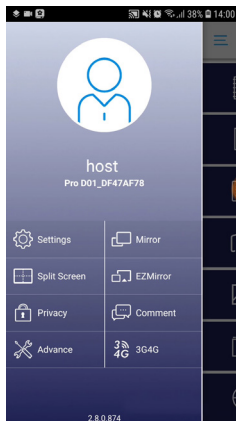
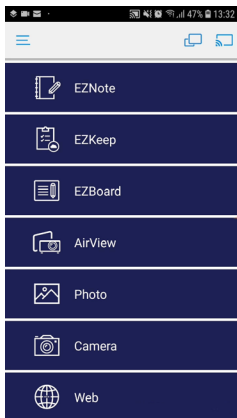
## Split Screen

Split Screen allows you to separate the screen to up to 4 parts and allow for 4 participants to present simultaneously.

### For mobile devices or tablets

The Split Screen feature is located in the Host menu. Press the host menu button  on the top left corner of the app to access it.

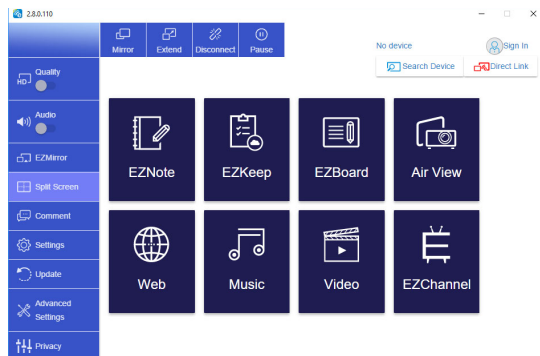
- 1) Press 'Split Screen' in the host menu
- 2) Press on one of the options - split the screen in 2 or 4 screens



### For laptops and PCs

The Split Screen feature is located on the left side menu of the EzCast Pro app. Please, ensure you are connected to a SCRIPTCAST device prior to using this feature.

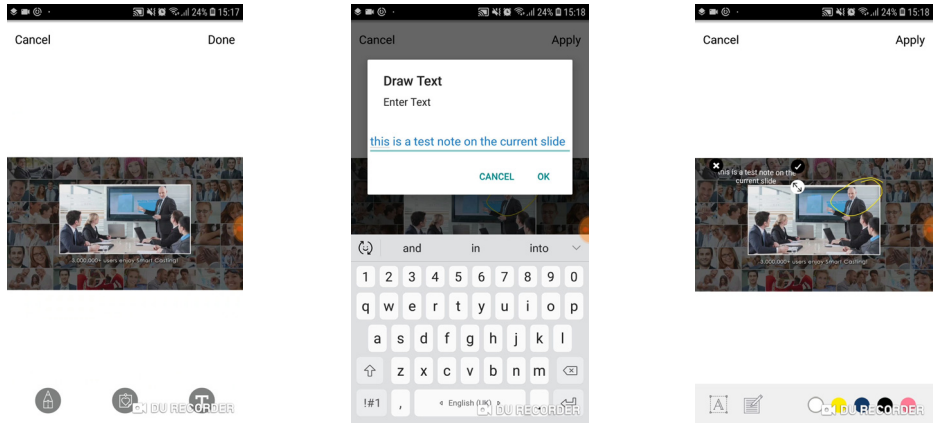
- 1) Press the 'Split Screen' option
- 2) Choose to split the screen in 2 or 4 screens



## EzNote

This feature allows you to take notes on top of the current slide and save locally to your device or send to your EzKeep account

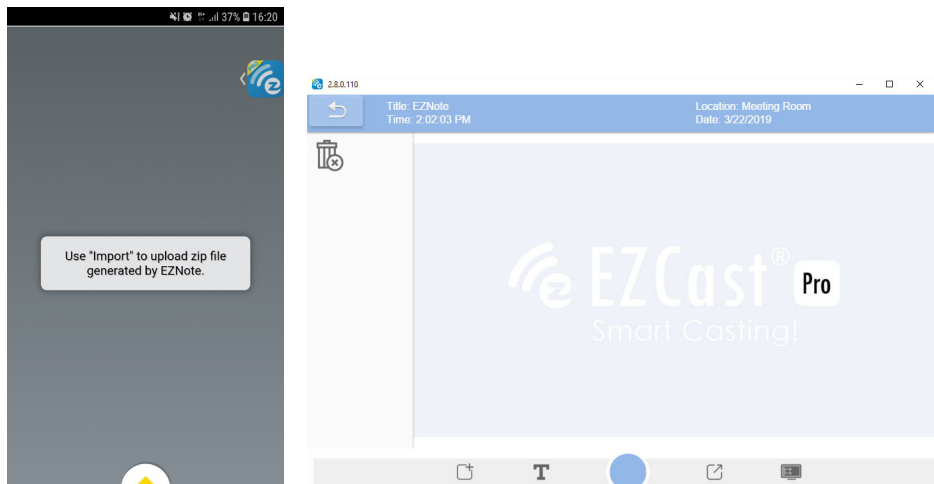
- 1) Open EzNote and press the editing icon on the bottom left corner to start adding notes to the current slide
- 2) Press 'Apply' on the top right corner to apply the changes and press 'Done' to save the image



## EzKeep

You can use EZKeep to store all your saved meeting notes on the cloud, to be shared across all your work devices

You need to be a registered user of EzCast to use this feature. Press the EzKeep option and login to your EzCast account or sign up with new account. To import notes from EzNote, press the arrow on the bottom of the screen and select 'Import'

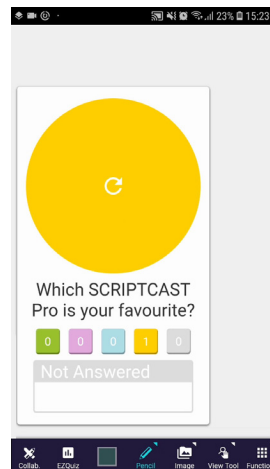
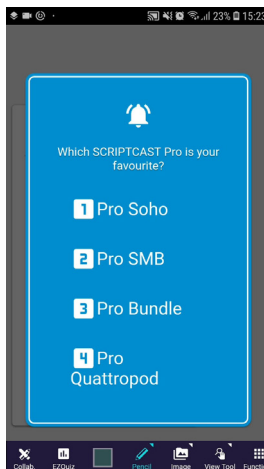
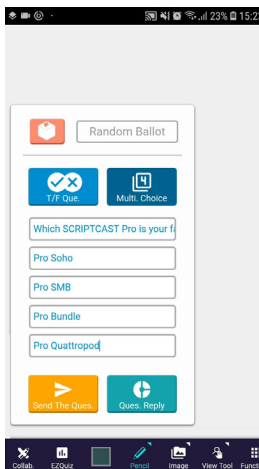
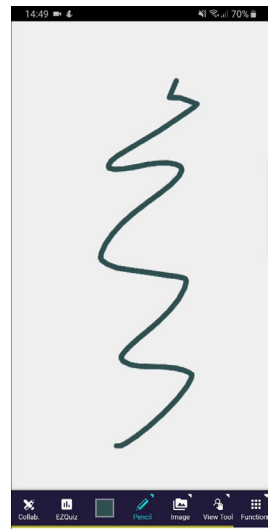
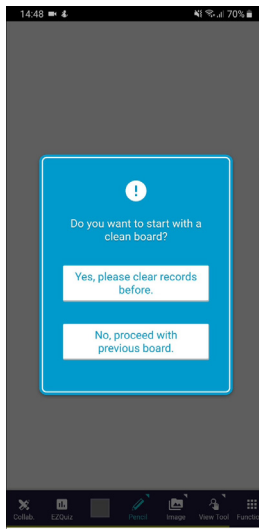
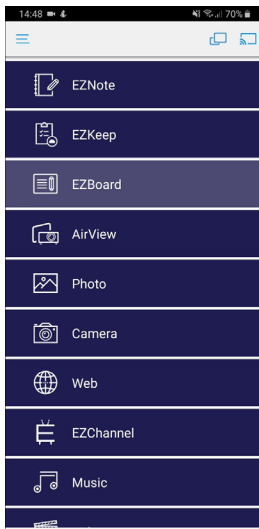




## EzBoard

This feature offers the host to use a white board where the presenter can draw and take notes on the big screen.

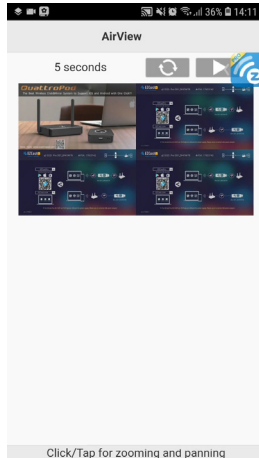
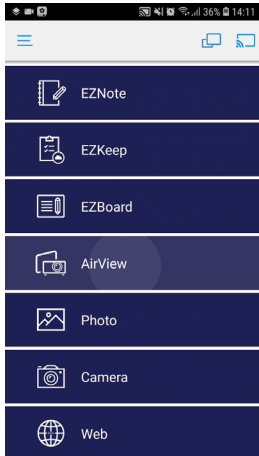
- 1) Open EzBoard and start drawing your notes on the white board.
- 2) You can change brush type, colour, stickers, import an image and type text on the board.
- 3) You can also set up & send a live quiz to all delegates connected to the same SCRIPTCAST device
- 4) Press 'Apply' on the top right corner to apply the changes and press 'Done' to save the image



## AirView

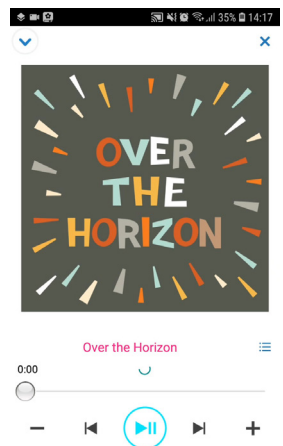
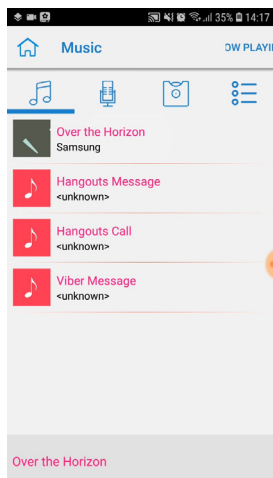
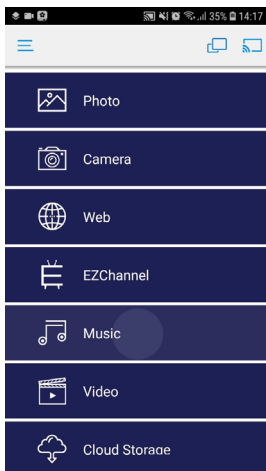
This feature allows for the delegates to see the main screen on their own devices. The AirView refreshes every 5 seconds.

- 1) Press the AirView option
- 2) Press the arrow button to start the live view, that will make the screen refresh every 5 seconds



## Music

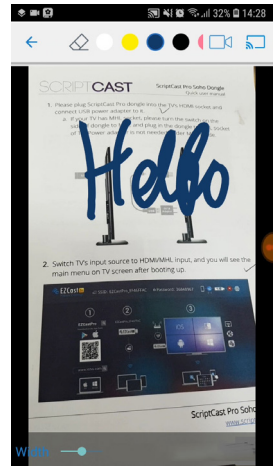
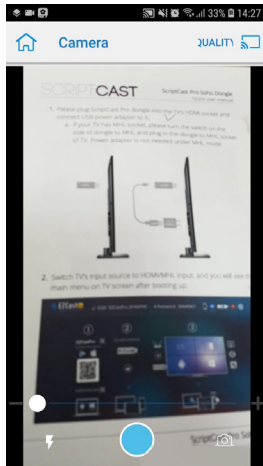
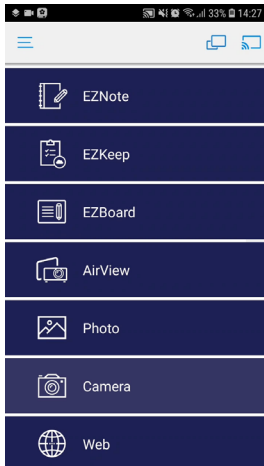
This feature allows delegates to play music saved on their connected devices. Press the 'Music' option and choose the track you want to play from your device's storage



## Camera

This feature allows the host to use their camera to show live feed on the main screen

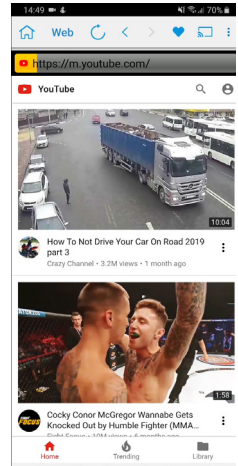
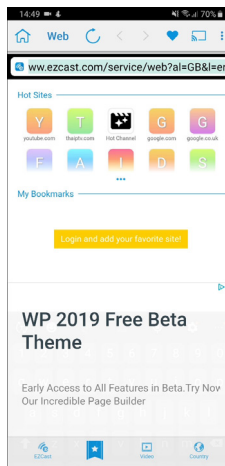
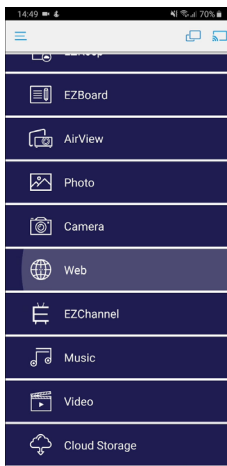
- 1) Press the 'Camera' option
- 2) Whatever is shown on your camera will appear on the main screen



## Web Browser

The EzCast Pro app offers its own, built-in web browser that delegates can use to access web pages on the main screen

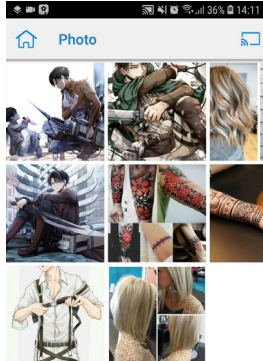
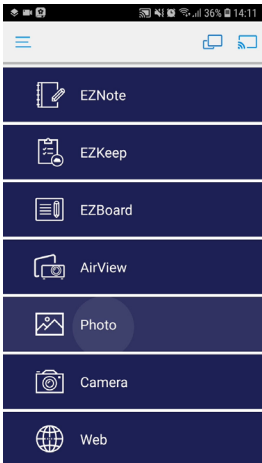
- 1) Press the 'Web Browser' option
- 2) Type the website you wish to access in the browser tab and press enter to search



## Photo

This feature allows delegates to share photos from their devices on the main screen

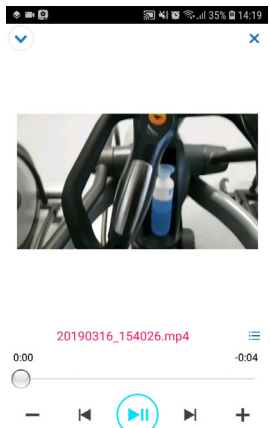
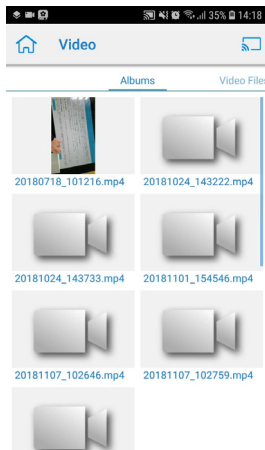
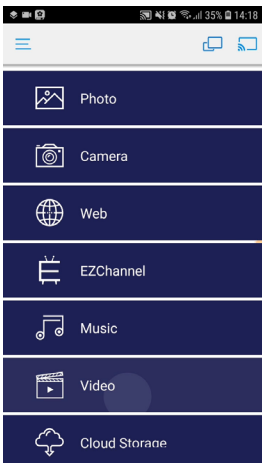
- 1) Press the 'Photo' option
- 2) Choose the image you wish to show from your device's storage



## Video

This feature allows you to screen mirror any video, saved on your local connected devices, on the main screen.

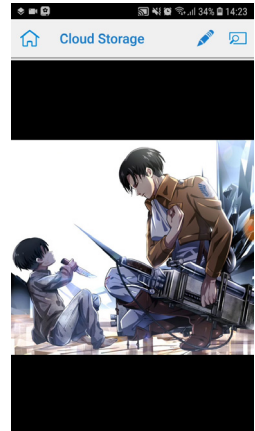
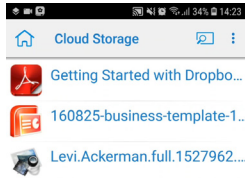
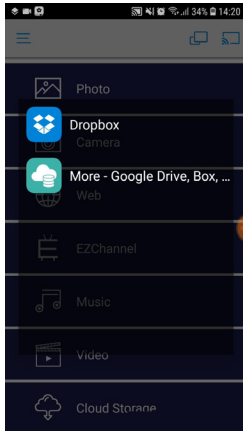
- 1) Press the 'Video' option
- 2) Choose your video from your device's storage and it will start playing on the main screen



## Cloud Storage

With Cloud Storage you can access images & videos from your Dropbox or Google Drive

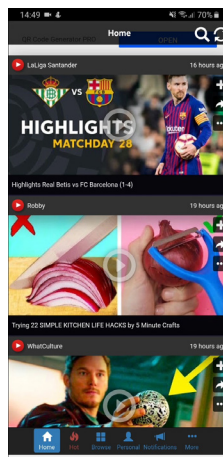
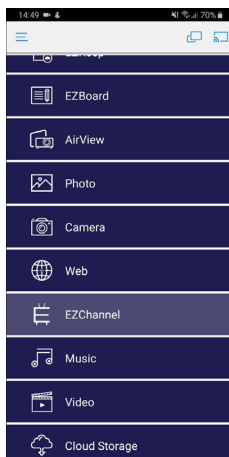
- 1) Press the 'Cloud Storage' option
- 2) Log into your Dropbox or Google Drive and select the file you wish to share



## EzChannel

EzChannel allows the presenter to watch YouTube & Facebook videos or live TV Channels & other apps on the main screen. EzChannel comes with YouTube, Facebook, Vimeo, Twitch and other streaming apps or allows you to choose live TV, Radio, and ready available films that can all be shared on the main screen.

- 1) Press the 'EzChannel' option
- 2) Choose the app/channel you wish to watch and press play. Please, note that some apps may require login/authentication



# SCRIPTCAST

@2019 SCRIPTCAST, MDV Enterprise Ltd. All rights reserved.

253-255 Great Lister St, Birmingham B7 4BS

Phone: 0844 870 7897

E-mail: [info@scriptcast.co.uk](mailto:info@scriptcast.co.uk)